



YHA (England and Wales)  
Youth Hostel Profile

compiled by the Association's volunteer archivist, John Martin, rev2020-01-01

Lulworth Cove Youth Hostel 1982 to present

School Lane, West Lulworth, Wareham, Dorset BH20 5SA

Historic County: Dorset

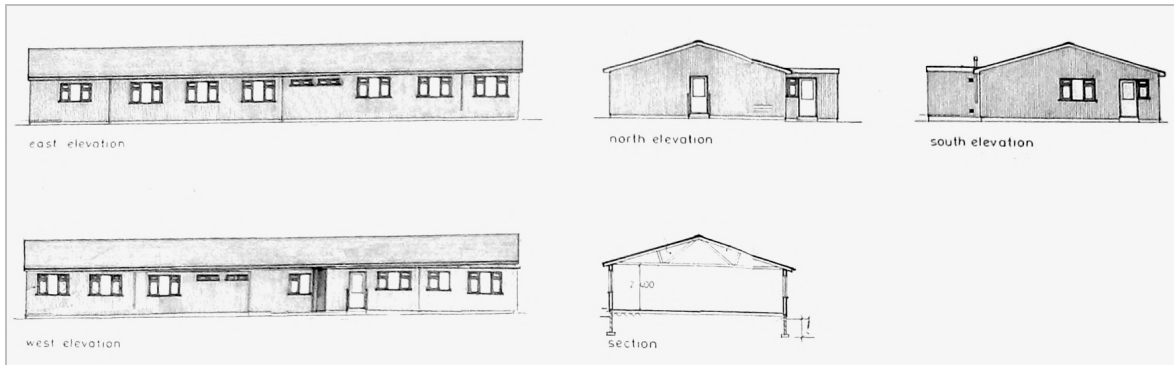
YHA Regions: South West, South

GR: SY 831806



Lulworth Cove youth hostel is a purpose-built chalet-type hostel of prefabricated cedarwood construction, designed in 1981 and supplied by F Pratten, Midsomer Norton.

It was built as a 32-bed hostel, with the aid of a generous grant from the Countryside Commission, and officially opened on 15th October 1982 by Colonel Sir Joseph Weld, Lord Lieutenant of Dorset. The hostel's tenure was a lease vested in the YHA Trust, initially of 30 years from 27th November 1981, from the Earl of Feversham. At the outset YHA named the new facility West Lulworth, and from 1983, Lulworth Cove. A simple plan placed six bedrooms at the north end of the building, entrance and public spaces at the centre, and staff accommodation across the south end.



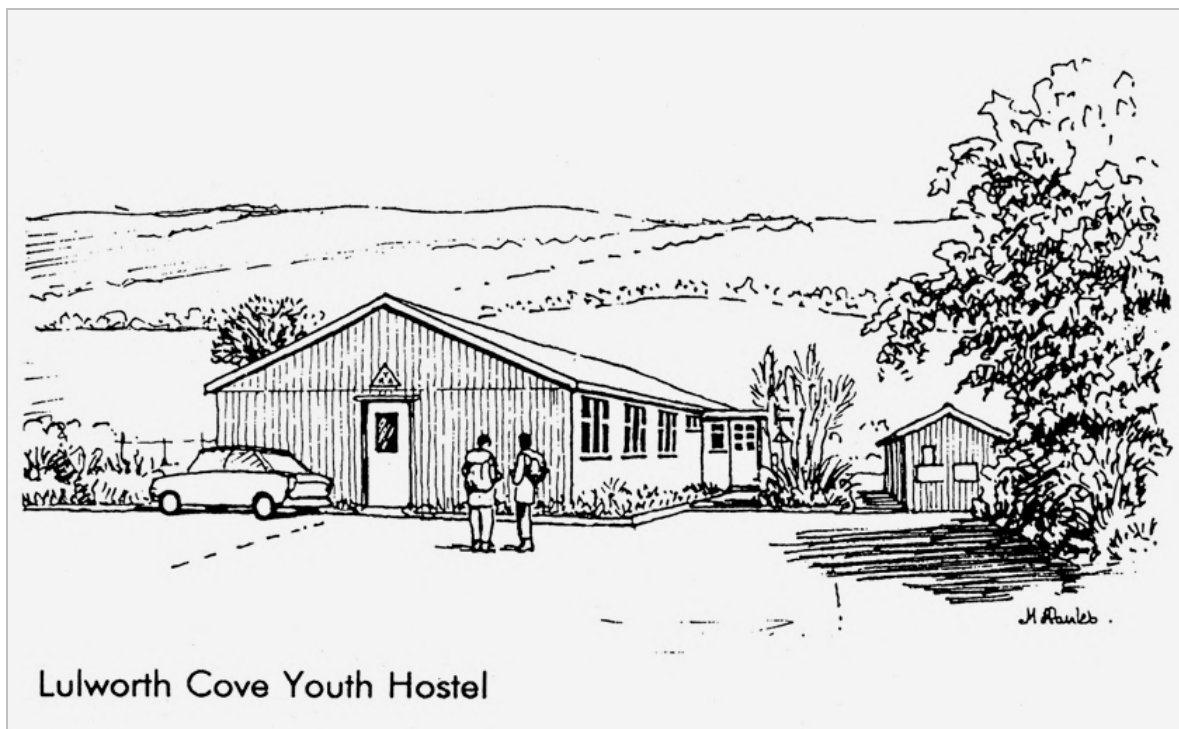
1: Pratten's 1981 design, in the simple form before the rearward extension of the late 1980s (YHA Archive)  
2: an early monochrome image by Cheshire cyclist Ron Sant, viewed from the north (author's collection)



*A 1983 photograph by Lincolnshire YHA volunteer George Miller, from the east, showing the more open aspect in those days; the neighbouring village school's sports ground has now encroached on the foreground (author's collection)*

The property was refurbished during 1988-89. Enhancement included an extension for new staff accommodation at the south-west corner. The original staff lounge and kitchen at the south-east corner became a seventh guest bedroom with en suite facilities. The capacity was thus slightly increased, to 34 beds. In 1991 flood prevention improvements and a new car park were provided.

The bedrooms have been allotted local names – Wareham, Kimmeridge, Durdle Door, Tyneham, Weymouth, Corfe Castle and Lulworth. The first manager was Sue Workman, followed by Angela Roberts, Rebecca Woodley, Gareth Brooke, Sharon Collier (from 2014) and Jason Emery (from 2019).



**Lulworth Cove Youth Hostel**

*An attractive sketch of Lulworth Cove hostel by Martyn Hanks (YHA Archive)*



1



2

Lulworth Cove youth hostel in September 2014.

1: Lulworth hostel, view south towards the ridge separating the building from the famed Lulworth Cove;  
 2: view north-east from the ridge. The newer staff extension can be seen at the right end of the building, partly hidden by vegetation. The hostel is located at the end of School Lane, a cul-de-sac in West Lulworth village  
 (author's photographs)

<i>Overnights – inclusive periods each year as follows</i>									
<i>1982-1991: previous Oct to Sept; 1992: Oct 1991 to Feb 1993; 1993-present: Mar to following Feb</i>									
<i>*: 17 month period; +: notional figure included for exclusive hire and / or camping</i>									
1980	1981	1982	1983	1984	1985	1986	1987	1988	1989
...	...	1958	4134	4563	5276	5299	5611	5775	5940
1990	1991	1992	1993	1994	1995	1996	1997	1998	1999
6168	5921	6370*	5983	6716	6539	6369	6429	6565	6674
2000	2001	2002	2003	2004	2005	2006	2007	2008	2009
6158	6289	6749	7086	6504	6562	6762	5637	4812	4978
2010	2011	2012	2013	2014	2015	2016	2017	2018	2019
4521	5427+	6248+	6373+	6250+	7316+	7199+	7689+	7298+	7565+